

MOONS'

moving in better ways

ENGLISH



Scan QR Code.
Learn more MOONS' News.



MN COMPANY PROFILE I



Founded in 1994, MOONS' has grown to be a leading manufacturer of integrated motion control products, intelligent lighting products, and intelligent management systems. MOONS' is dedicated to providing its customers with system-level solutions and continuously keeps the way to pursue innovation and high quality.

So far MOONS' has had a worldwide presence with sales, R&D or manufacturing sites in the United States, Europe, Japan, and Southeast Asia. There are more than 4,000 employees today in MOONS' who are committed to providing the best solutions to meet all customers' needs.

On May 9th 2017, MOONS' entered the capital market and was listed on the Shanghai Stock Exchange. Since then, MOONS' began to leverage these additional resources to widely expand its offerings and make all efforts to move in better ways.

MOONS'

moving in better ways

Strategy of Business Development

Be a strong player in the smart world
Be Customer-Oriented and engaged in the Pursuit of Excellence

Strategy of Product Development

4C+1i
Communication
Close loop
Connectivity
Customization
integration, 1+1=3

OUR MISSION

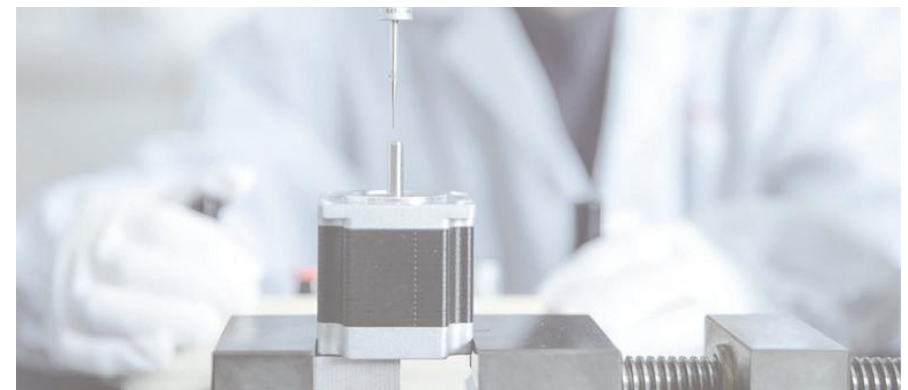
To provide outstanding value in automation solution and lighting control products through innovation for an increasingly intelligent and interconnected world

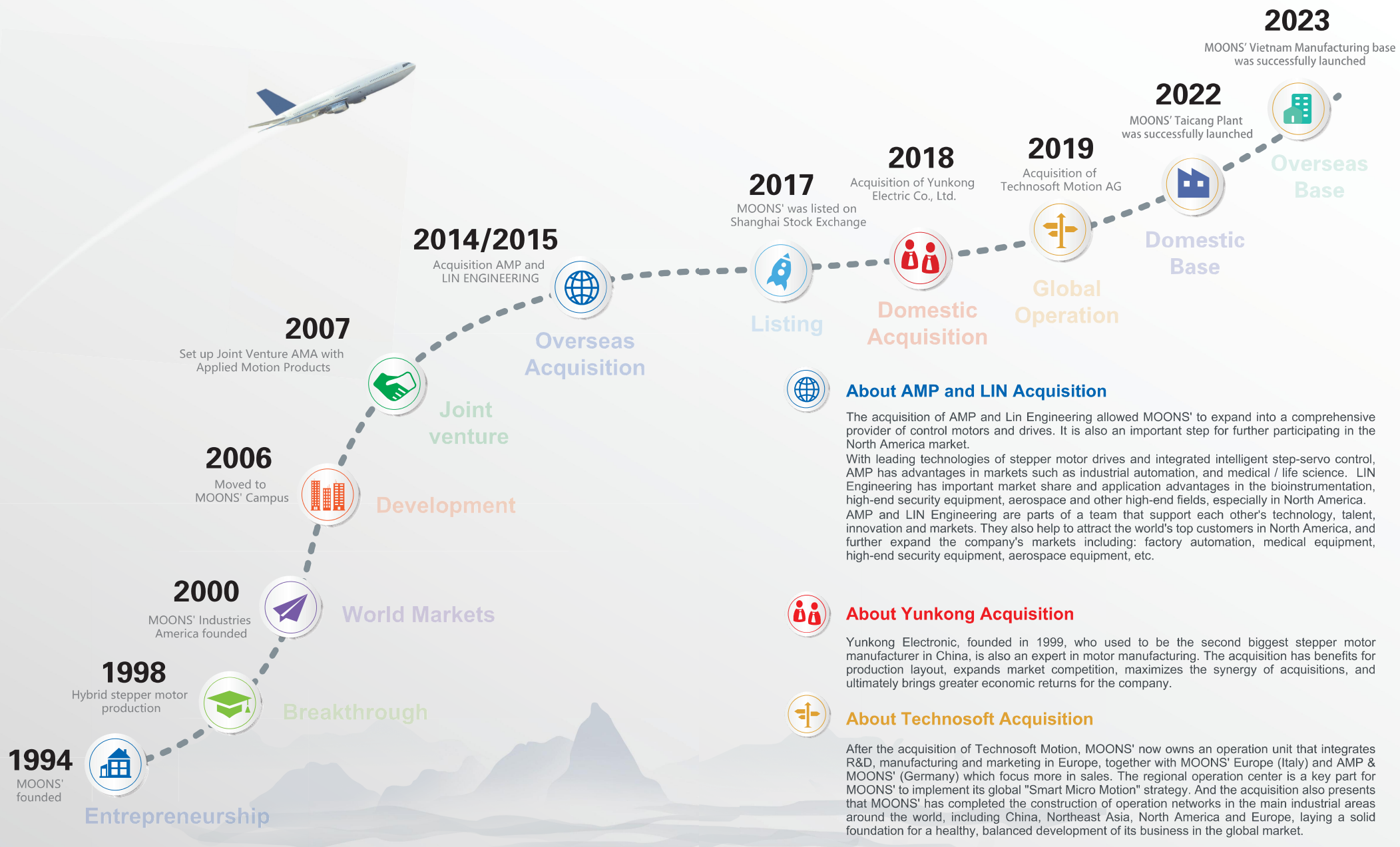
OUR VISION

To be the world's leading company in every business we are dedicated to

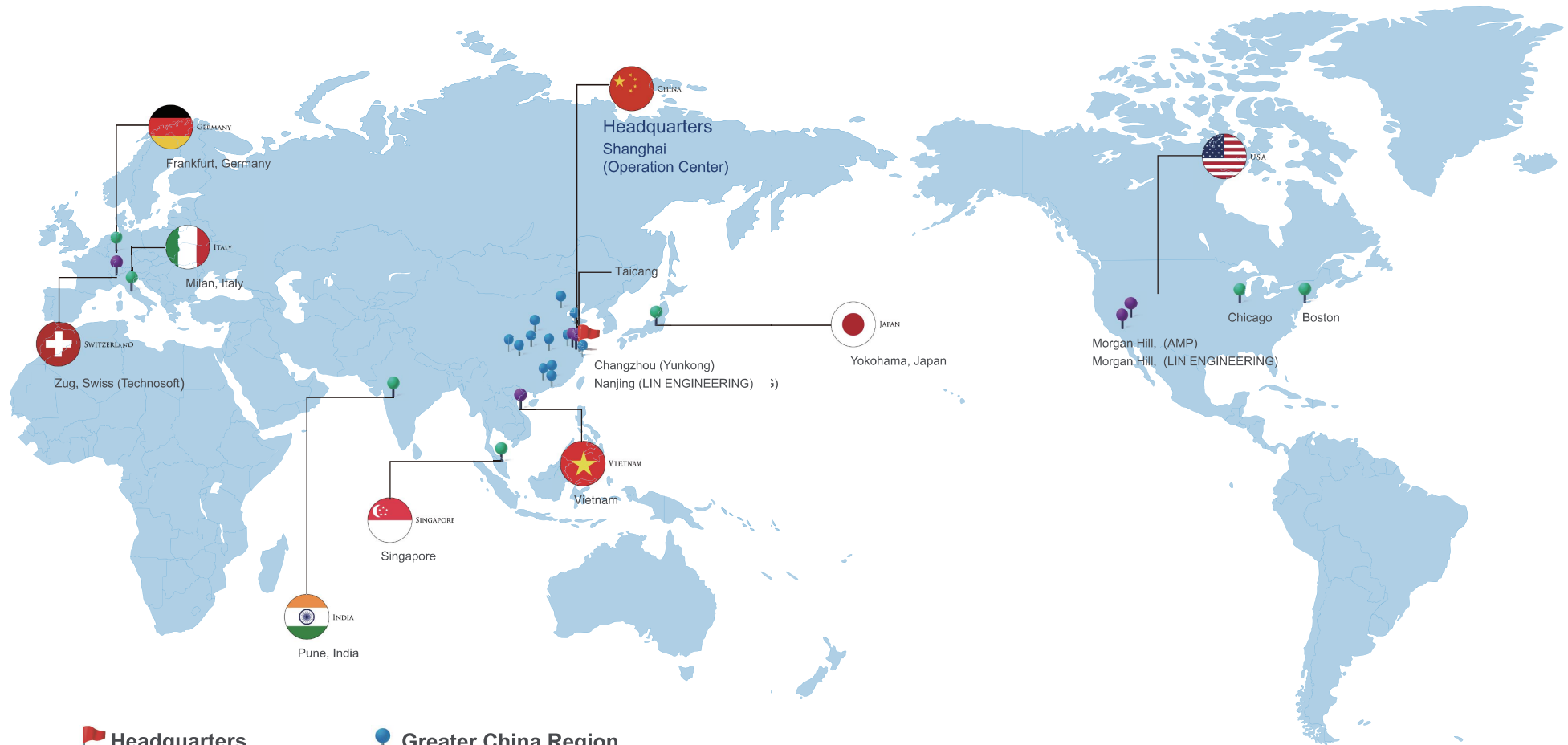
OUR VALUE

Customer-centered and always moving in better ways focusing on Employees, Customers and Partners





MN WORLDWIDE SERVICE NETWORK



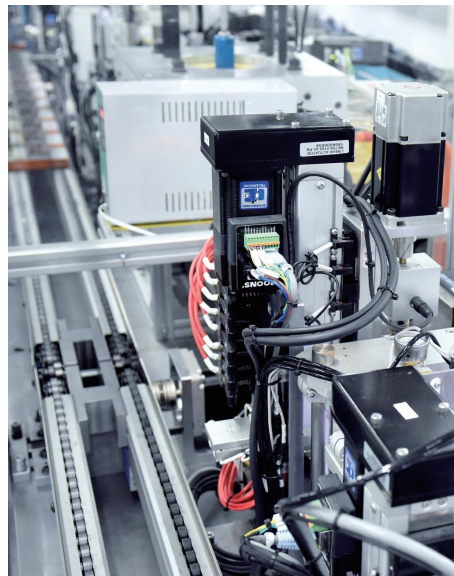
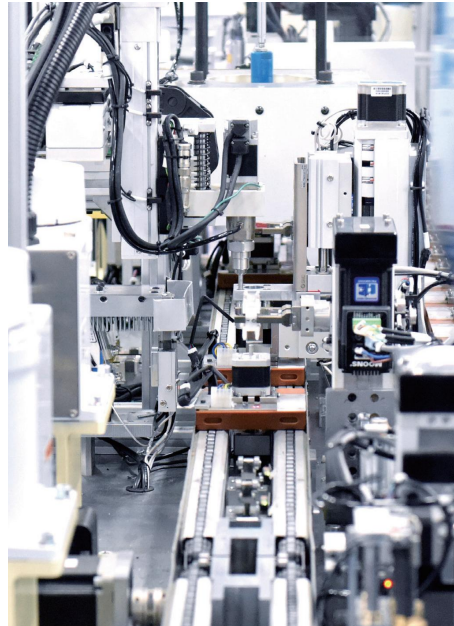
MOONS' has set up ten offices in China, as well as subsidiaries in other countries including the United States, Italy, Singapore, Japan and Germany. Our business covers major countries and regions in North America, Europe, Asia and Southeast Asia ensure MOONS' close to where you are.

MN INTELLIGENT MANUFACTURING I

MOONS' is moving in better ways by transforming traditional manufacturing into Intelligent Manufacturing. To demonstrate this we have designed and successfully launched a fully automatic assembly line producing hybrid step motors at our Shanghai facility. Come and see it!

This assembly line integrates MOONS' stepper motor manufacturing experience with robotics, PC control, motion control, machine vision, EtherCAT bus, Open Platform Communications (OPC) and other advanced technologies. It is an Intelligent and flexible automatic assembly line. The line is capable of assembling the motor, while tabulating production rates and quality checks. The rates and checks are steadily maintained throughout the day. MOONS' team members are liberated from boring and tedious tasks and are free to be trained to master this advanced technology.

It is a "LIVE" application of MOONS' motion control products. More than 100 MOONS' motors and motor drives, and linear actuators were used in its design. It fully demonstrates the reliability, stability, and repeatability of Intelligent Manufacturing. And it is another example of how MOONS' moves our world of experience to you.



MN MOONS' GLOBAL E-COMMERCE I

MOONS' Global E-commerce is a self-operated cross-border e-commerce platform developed with the business development concept of "sell globally, buy globally". MOONS' Global E-commerce aggregates high-performance, high-quality, and distinctive products from various sub-sectors of the global motion control and intelligent lighting industry, and provides related technical documents and software downloads, product video training, and other value-added services. It is committed to creating a professional e-commerce platform for the global motion control and intelligent lighting industry and becoming a one-stop product direct supply + technical support service provider for global professional users. MOONS' Global E-commerce - the choice of experts' innovation!

Positioning of Products and Services

MOONS' Global E-commerce, with high-performance, high-quality, distinctive standardized stock products and professional technical support services, fully meets the high demands of global engineers and maker groups in the concept, research and development, prototype and other innovation development and application stages for product performance, rapid delivery, technical support, etc.



Packaging



Labeling



Global Express Delivery

Platform

MOONS' Global E-commerce has currently opened a multi-language platform in Chinese, English, and Japanese, and supports access from both PC and mobile terminals. Global users are welcome to visit online anytime, anywhere.



1.Select Products



2.Payment



3.Transportation



4.Delivery



FAST Project

Motion Control Products and Solutions

MOONS' has been in the hybrid stepper motor business for more than 20 years, and is now a leader in hybrid stepper R&D, motor driving technologies as well as manufacturer technologies. MOONS' has grown to where it is now one of the largest global manufacturers of stepper motors, and related motion control products including: high quality stepper motors, BLDC motors, servo motors, slotless BLDC motors, linear motors, motor drives and actuators.

Applications



Textile Machinery



Packaging Equipment



Banking Equipment



Intelligent Stage Lighting



Solar Control Systems



Robotics



Security Systems



Automotive



Vending



Telecom



Pump and Valve



Aerospace



Medical Device



Professional Printer

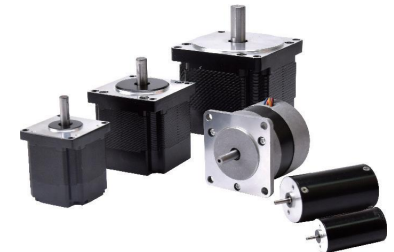


3D Printer

Motors



Hybrid stepper motors /
Permanent magnet stepper motors



BLDC motors



Slotless BLDC motors



Super Low Detent Torque motors /
Vacuum motors

Lin Engineering obtains NSF-ISR issued AS 9100D certificate, that meets Aerospace industry special requirement.

Remarkable successful cases

Reaching Outer-Space (FAST)

Up to Space (Satellite)

The UP Sky (Loon)

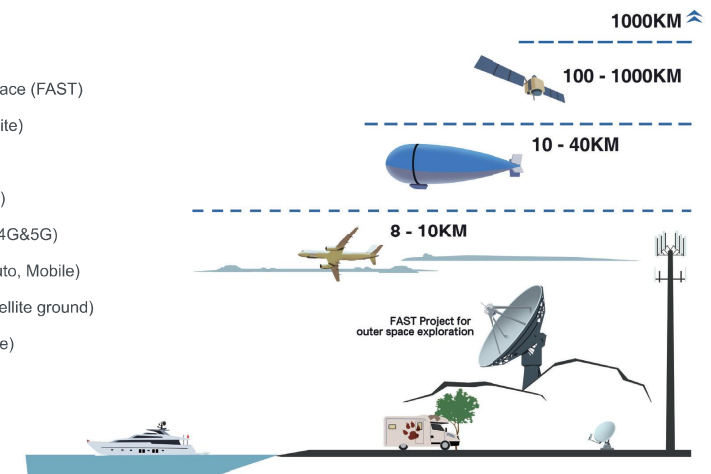
In the Sky (Aviation)

On the Tower (3G, 4G&5G)

Ride on Vehicle (Auto, Mobile)

On the ground (Satellite ground)

At the Sea (Maritime)





Motion Control Products and Solutions

Through independent R&D and advanced technologies from around the world, MOONS' now produces many products with excellent performance, safety and reliability. These include stepper motors and drives, step-servo motors and drives, MOONS' develop a full line of drives to complement our diverse line of brushless motors. Our drives control stepper, BLDC, and servo motors. They employ industry standard Bus Communications including EtherNet/IP, CANopen and others to support your factory network communication requirements.

MOONS' linear motion products provide variable torque and precision using a variety of standard lead screws and ball screws. Our linear Actuators were developed using innovated compact designs, with both open loop and close loop control options. Smaller sizes allow design engineers more flexibility. Their design offers quiet operation, and includes encoder, brake and various length options.

MOONS' is committed to providing customers with more stable, intelligent, and convenient motion control solutions.

Applications



FA



Solar



Robot



Material Handling



Lithium battery



Intelligent OA



Scientific Instrument



Semiconductor



3C



Tool

Motors and motor drives



Motion Controllers



Servo Systems



Stepping Servo Systems



Integrated Motors

Linear Motion Products



Linear Stepping Motors



Linear Servo Motors



Linear Modules



Micro Cylinders



Ball Screws



Precision Electric Displacement Platforms



Niagara Fall

LED Driver and Intelligent Lighting Control System

MOONS' LED Driver and Intelligent Lighting Control Systems have been helping lead the LED lighting revolution since 2005. Our advanced lighting solutions are widely used in commercial and industrial projects around the world. Designed to interface with electrical grids everywhere, MOONS' LED Intelligent Control Systems regulate todays' modern lights in ways that were impossible just a few years ago. Communicating with external sensors, MOONS' Systems can control power, intensities and color that can be matched to changing conditions. We help you and your project look better.

Applications



Street Lighting



Tunnel Lighting



Human Centric Lighting



Medical Lighting



Automobile Lamp



Landscape & Architecture Lighting



Smart Building Lighting



Other Particular Application

Products



Intelligent LED Drivers



Explosion Proof LED Drivers
Constant Power LED Drivers

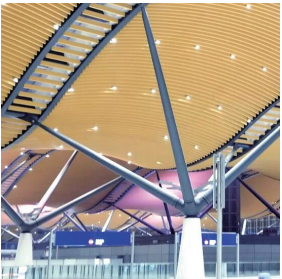


Intelligent Lighting Control Systems



Stadium Lighting LED Drivers

Remarkable successful cases



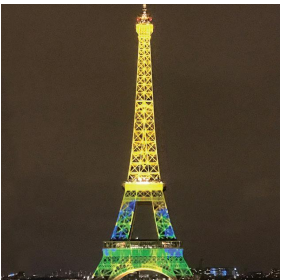
Hong Kong-Zhuhai-Macao Bridge(Hong Kong-entrance), China



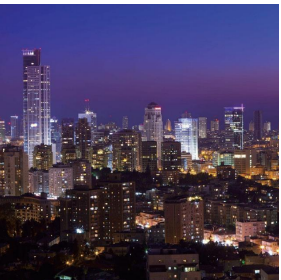
Apple Store, Shibuya, Japan



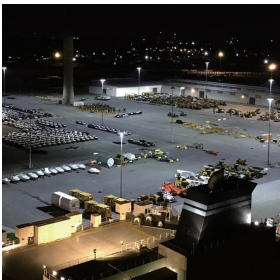
Lanzhou Highway Tunnel, China



2018 Eiffel Tower Show, France



Tel Aviv Street lighting, Israel



Savannah Port, USA



Equipment Management Total Solution

MOONS' keeps industry moving in Better Ways by offering advanced hardware and software solutions for the inspection and maintenance of critical plant equipment. For over 20 years MOONS' has supplied these to industries including the power, petrochemical, coal and others monitoring critical processing equipment, notifying plant managers of required maintenance and conditions leading to failure before disaster occurs. Our customers have experienced the extension of service life and production efficiency, by reducing downtime and spare parts inventory. Trust MOONS' to help predict failures before they happen.

Applications



Power
industry



Metallurgy
industry



Petrochemical
industry



Coal industry



Automobile
industry



Tobacco
industry



Pulp and Paper
industry

MOONS'

Products



Single Channel Vibration Detector
(Optional: Bluetooth Vibration Sensor)



Wireless Vibration Monitoring System



Dual Channel Vibration Analyzer



Wired Vibration Monitoring System

Remarkable successful cases



Ball Mill Monitoring
– Mineral Separation Plant



Condensate Pump Monitoring
– Power Plant



Belt Conveyor Monitoring
– Coal Mine Plant

International Trade

MOONS' International Trading (Shanghai) Co., Ltd was established in Shanghai Waigaoqiao Free Trade Zone in 1998. We specialize in the distribution of electronic parts and components such as relays, sensors, capacitors, switches, servo and frequency converters mainly with Panasonic brand, etc. With the rapid and steady development of the business, we have gradually started to introduce production equipment to Chinese customers since 2010. We are also selling Panasonic SMT and Plug-in machine in recent years.

MOONS' International Trading (Shanghai) Co., Ltd has built long-term close cooperative relations with numerous well-known enterprises for more than 20 years. With our good customer relations and business reputation, and our experience and professional technical support services, we create greater value for our customers.

Applications



Electricity



Automobile



Home Appliance



Charging Pile



Illumination

Products

Electric Power Transmission

Power relays

DSP series
ST series
DK series



PhotoMOS

AQY series
AQV series
AQW series



Signal relays

TQ series
TX series
DS series



Capacitors

Conductive Polymer
Capacitors
Film capacitors
Gold capacitors



Other Categories

Batteries
Sensors
Storage cards



Automotive

PCB relays



Plug-in relays



EV relays



PhotoMOS



Switches



Industrial Control

Servo Motors



Programmable Logic Controllers



Laser marking machine



With world class business management, MOONS' is ready to be your reliable and strategic long-term partner. "Moving in Better Ways" is our company declaration. It symbolizes that MOONS' is moving forward continuously on the road to the future.

No matter what you need, MOONS' will figure it out with more accuracy, efficiency and energy-saving. No matter what you dream of, MOONS' can help make it come true with the most intelligent and reliable method.

MOONS' Headquarters

Shanghai
Room 1608 Mingjiao Road, Minhang District,
Shanghai 201107, P.R. China
Tel: +86 (0)21 52634688
Fax: +86 (0)21 52634098

MOONS' Taicang

Room 16 & No.18 Yingang Rd, Fuqiao Town,
Taicang City,
Jiangsu Province, 215434, P.R. China
Tel: +86 (0)512 80601118
Fax: +86 (0)512 80606808

Domestic Sales Offices

Shenzhen
Room 3901, 39/F Building A, Zhongguan
Times Square, No. 4168 Lixian Avenue,
Nanshan District,
Shenzhen 518000 P.R. China
Tel: +86 (0)755 25472080
Fax: +86 (0)755 25472081

Beijing
Room 1206, Jing Liang Mansion, No.16
Middle Road of East 3rd Ring, Chaoyang
District, Beijing 100022, P.R. China
Tel: +86 (0)10 87661889
Fax: +86 (0)10 87661880

Nanjing
Room 1101-1102, Building 2, New Town
Development Center, No.126 Tianyuan
Middle Road, Jiangning District,
Nanjing 211106, P.R. China
Tel: +86 (0)25 52785041
Fax: +86 (0)25 52785485

Qingdao
Room 1913, Scientific and Technological
Innovation Building, Floor 19,
No.171, Shan Dong Road, Shibei District,
Qingdao 266033, P.R. China
Tel: +86 (0)532 80969935
Fax: +86 (0)532 80919938

Wuhan
Room 3001, World Trade Tower,
No.686 Jiefang Avenue, Jiangnan District,
Wuhan 430022, P.R. China
Tel: +86 (0)27 85448742
Fax: +86 (0)27 85448355

Chengdu
Room 3907, Maoye Plaza, No.19,
Dongyu Street, Jinjiang District,
Chengdu 610066, P.R. China
Tel: +86 (0)28 85268102
Fax: +86 (0)28 85268103

Xi'an
Room 1006, Tower D, Wangzuo
International City, No. 1 Tangyan Road,
Yanta District, Xi'an 710065, P.R. China
Tel: +86 (0)29 81870400
Fax: +86 (0)29 81870340

Ningbo
Room 309, Tower B, Taifu Plaza,
No. 565 Jiangjia Road, Jiangdong District,
Ningbo 315040, P.R. China
Tel: +86 (0)574 87052739
Fax: +86 (0)574 87052365

Guangzhou
Room 4006, Tower B, China Shine Plaza,
No.9 Linhe Xi Road, Tianhe District,
Guangzhou 510610, P.R. China
Tel: +86 (0)20 38010153
Fax: +86 (0)20 38103661

Chongqing
Room 2108, South yuanzhu Building 20,
No.18 Fuquan Rd., Jiangbei District,
Chongqing 400000, P.R. China.
Tel: +86 (0)23 67601782
Fax: +86 (0)23 67085997

Suzhou
Room 1103-1105, North Building 4,
Huizu Plaza, 758 Nanhuan East Road,
Gusu District, Jiangsu Province
Suzhou 215007 P.R. China.
Tel: 400-820-9661

Hefei
Room 1521, Building B, CBC Tuoji Plaza,
Jinggang Road, Shushan District,
Hefei, Anhui Province, 230088, P.R. China.
Tel: 400-820-9661

Dongguan
Room 1106-1207, Building 5, Linrunzhigu,
No.1 RD 5th Rd, Songshan Lake, Dongguan,
Guangdong Province, 523000, P.R. China
Tel: 400-820-9661

MOONS' International Trading (Shanghai) Co., Ltd.

4/F, Building 30, No. 69 Guizhi Road,
Caohejin Hi-Tech Park, Xuhui District,
Shanghai 200233, P.R. China
Tel: +86 (0)21 64952755
Fax: +86 (0)21 64859949

Changzhou Yunkong Electronic Co., Ltd.

BLDC2, Henglin Technology Innovation
Center No. 88 East Changhong Road Wujin
District, Changzhou, Jiangsu 213100, P.R. China
Tel: +86 (0)519 88700355
Fax: +86 (0)519 88700229

Lin Engineering At Nanjing

No. 9 Science and Technology Innovation
Avenue, Jiangbei New Area, Nanjing
Intelligent F1-F3, Building C14,
Manufacturing Industrial Park,
Nanjing 210032, P.R. China
Tel: +86 (0)25 58844665

North America

MOONS' INDUSTRIES (AMERICA), INC.
Head Office
1113 North Prospect Avenue, Itasca,
IL 60143 USA
Tel: +1 630 8335940
Fax: +1 630 8335946

Boston Offices
36 Cordage Park Circle, Suite 310
Plymouth, MA 02360 USA

APPLIED MOTION PRODUCTS, INC.
18645 Madrone Parkway, Morgan Hill,
CA 95037 USA
Tel: +1 831 7616555
+1 800 5251609

LIN ENGINEERING, INC.
16245 Vineyard Blvd., Morgan Hill, CA 95037
Tel: +1 408 9190200
Fax: +1 408 9190201

Europe

MOONS' INDUSTRIES EUROPE HEAD QUARTER S.R.L.
Via Torri Bianche n.1 20871
Vimercate(MB) Italy
Tel: +39 (0)39 6260521
Fax: +39 (0)39 9631409

AMP & MOONS' AUTOMATION
(GERMANY) GMBH
Kaiserhofstraße 15
60313 Frankfurt am Main Germany

TECHNOSOFIT S.A.
Technosoft (Suisse) SA
Avenue des Alpes 20, 2000 Neuchâtel,
Switzerland
Tel: +41 (0)32 7325500
Fax: +41 (0)32 7325504

TECHNOSOFIT International
Strada Paduretu nr. 50, Sector 6 061992
Bucuresti ROMANIA
Tel: +40 (0)21 4259095
Fax: +40 (0)21 4259097

United Kingdom

MOONS' INDUSTRIES (UK) LIMITED
Reading, Berkshire, UK
Tel: +44 (0)7754 636288

Singapore

MOONS' INDUSTRIES (SOUTH-EAST ASIA)
PTE. LTD.
33 Ubi Avenue 3, #08-23,
Vertex, Singapore 408868
Tel: +65 66341198
Fax: +65 66341138

Japan

MOONS' INDUSTRIES JAPAN CO., LTD.
6F, Shin Yokohama Koushin
Building, 2-12-1, Shin-Yokohama,
Kohoku-ku, Yokohama, Kanagawa,
222-0033, Japan
Tel: +81 (0)45 4755788
Fax: +81 (0)45 4755787

India

MOONS' INTELLIGENT MOTION SYSTEM
INDIA PVT. LTD.
Room 908, 9th Floor, Amar Business Park,
Tol. Haveli, Baner, Pune, India, 411045
Tel: +91 8698390002

Vietnam

MOONS' INDUSTRIES (VIETNAM) CO., LTD.
Add: Factory C18/D1, Lot IN3-11'A, VSIP
Hai Phong Industrial Park in Dinh Vu - Cat
Hai Economic Zone, Lap Le Commune,
Thuy Nguyen District, Hai Phong City, Vietnam.
Tel: +84 (0)225 3533 168



http:// www.moonsindustries.com
E-mail: info@moons.com.cn
MOONS'
moving in better ways